



SCOPE ZIMBABWE STRATEGIC HIGHLIGHTS 2022 - 2026

Our Call



THEORY OF CHANGE

Young people are the agents of change, the capacity of households to absorb, adapt or transform in the face of evolving planet and increasing shocks can be improved if there is increased access by young people to a combination of relevant knowledge, information, training and livelihood assets at school (meso) (macro) levels and at household (micro) levels. Schools can effectively serve as demonstration Centres for Regenerative and transformed food systems.

Our Vision

We envision green schools and higher learning institutions that serve as learning and demonstration centres in building a citizenry that is eco-conscious.

Our Mission

We aim to increase the level of environmental knowledge and stewardship among all sectors of the community including the children, youths, policy makers and the business world to achieve sustainable development goals through an integrated approach.

Our Impact Statement

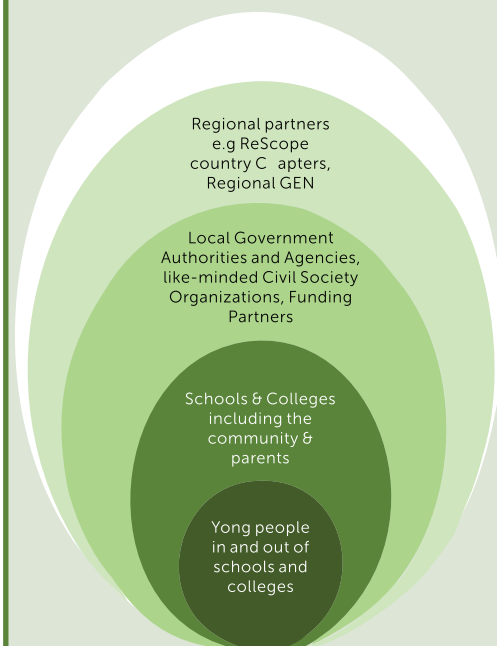
To protect and improve the environment and preparedness of children and youth in solving environmental risks and uncertainties in a changing climate.

OUR VALUE SYSTEM

At the very core of our value system is the value we place on young people as important influencers of the present and custodians of the future.



STRATEGIC PARTNERSHIPS AND TARGET GROUPS.



The work we do involves and benefits various stakeholders and community groups within and beyond Zimbabwe.

INTEGRATED LAND USE DESIGN TOOL

The Integrated Land Use Design (ILUD) is a holistic and critical approach and tool to the management of the school environment that facilitates the realisation of the organisation's mission. Applied in over 200 schools in Zimbabwe since 1994, the ILUD tool acts as planning, implementation and monitoring tool utilized for sustainable land-use whose design brings together the parents, learners and teachers in its planning and implementation. The tool and approach underscores stakeholder participation, ecological integration and leadership as key principles and is premised on five defining and interrelated processes initiated by grounding

When implemented successfully, schools and communities in projects and programs informed by the ILUD tool, process and approach can benefit from a wide range of physical and socio-economic outputs

